

Projection Film

1. What is Projection Film?

- a. Rear type application
- b. Projector is behind screen
& no shadow by presenter
- c. Useful for display advertisement for outdoor
- d. 5 types available
 - Clear / Dark Gray / Gray
 - Double White / White



2. Check point & Specification

- a. Reduce hot spot from projector
- b. Applicable in any glass
- c. Prevent use recycled Poly Carbonate



Product Type	Thickness (μm)	Film Width (mm)	Transmittance (%)	Haze (%)	Gain	View Angle (°)	Contrast	Hardness (H)
Transparent	100	1524	88	33.5	6	150	200:1	3
Ultra HD	100	1524	54	95	3	120	400:1	2
HD	100	1524	92	93	5	150	200:1	2

Projection Film

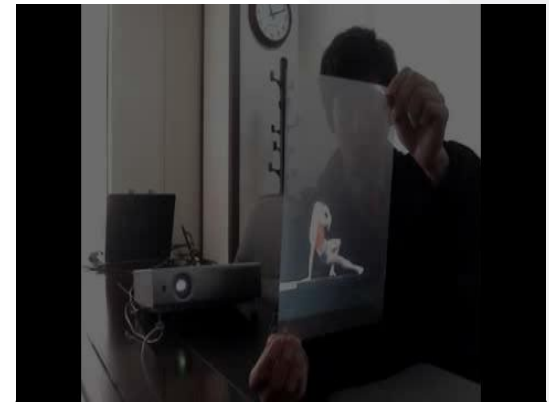
3. Where can apply?



<Show room>



<Restaurant>



<School / Office>



<Concert hall>



<Shopping mall>



<Amusement park>